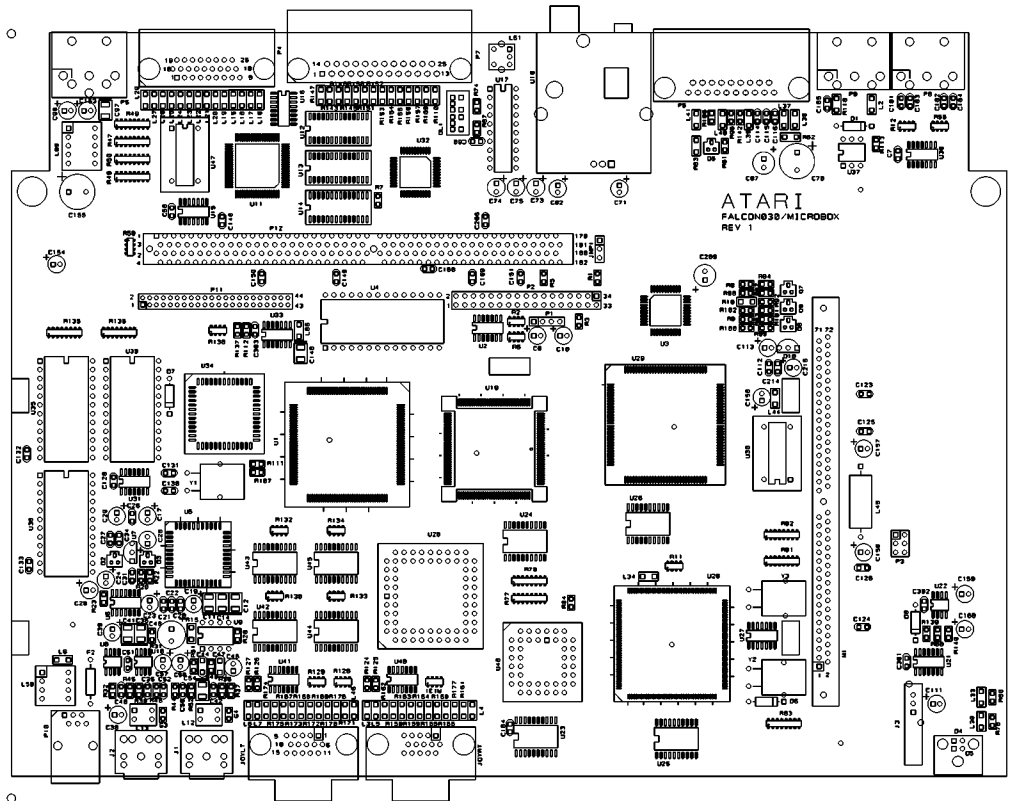
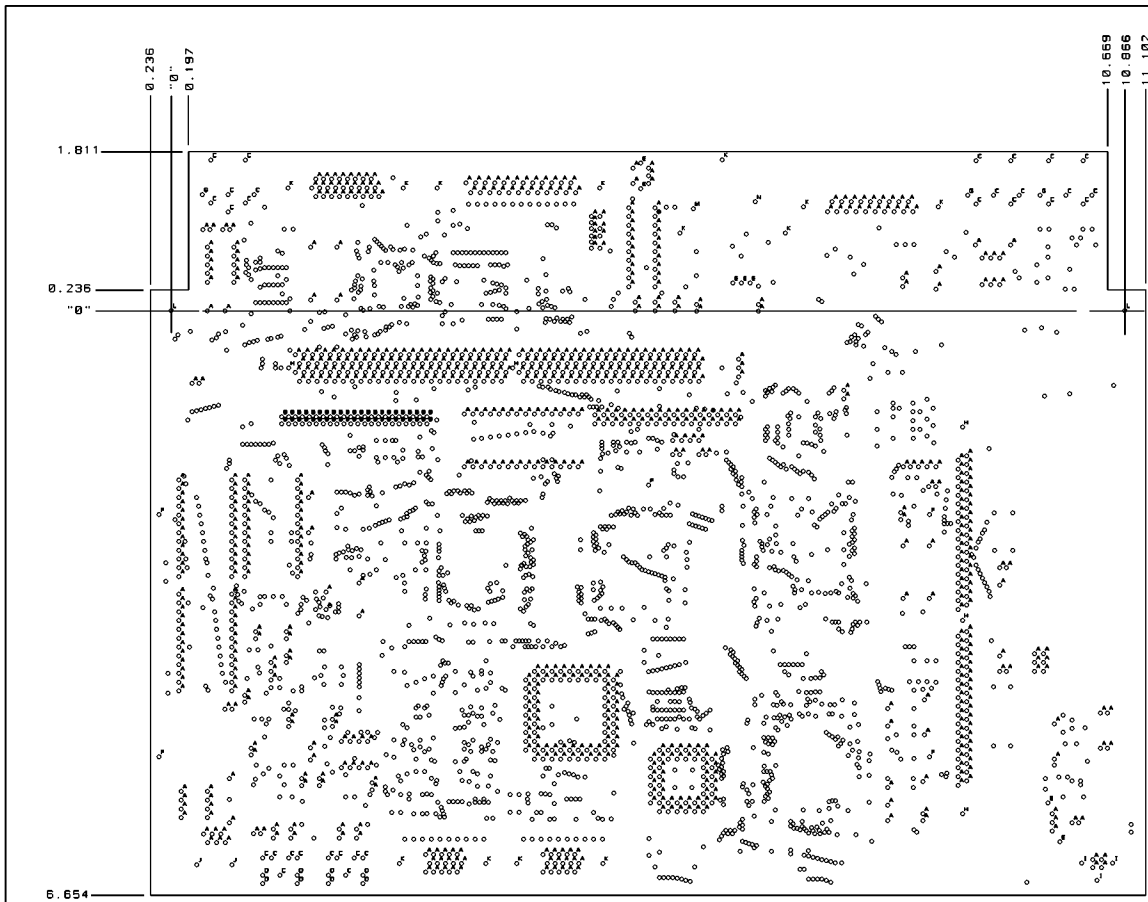


REVISIONS			
LTR	DESCRIPTION	DATE	APPROVED



TOLERANCES UNLESS OTHERWISE SPECIFIED FRACTIONS DEC ANGLES : : :		ATARI		
APPROVALS		DATE	ASSY. DRAWING	
DRAWN			FALCON030/MICROBOX	
CHECKED			SCALE 1 : 1	SIZE C
REV		1	DO NOT SCALE DRAWING	DRAWING NO. SHEET 1 OF 2

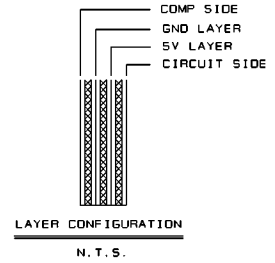


REVISIONS			
LTR	DESCRIPTION	DATE	APPROVED

HOLE CHART			
CODE	SIZE ± 0.003	DESCRIPTION	QTY
NDNE	0.012	PLATED THRU	1956
A	0.038		808
B	0.028		44
C	0.059		29
D	0.047		8
E	0.050		7
F	0.071		5
G	0.075		3
H	0.096	NOT PLATED	5
I	0.106	PLATED THRU	3
J	0.124	NOT PLATED	2
K	0.125	PLATED THRU	13
L	0.157	PLATED THRU	2
M	0.236	NOT PLATED	1
N	0.276	NOT PLATED	1

FILM REQUIRED	TOLERANCES
SILKSCREEN (2 FILMS)	DECIMALS X.XX ± 0.01
COMP. SIDE	X.XXX ± 0.005
SOLDER SIDE	ANGLES ± 2°
SOLDER MASK BOTH SIDE (2 FILMS)	
GROUND	
VOLTAGE	

- NOTES: UNLESS OTHERWISE SPECIFIED
1. MATERIAL: BASE MATERIAL LAMINATED EPOXY GLASS (COLOR GREEN) GRADE NEMA FR-4, 2 SIDES 1 OZ. COPPER PER MIL-P-13949 AND IS UL APPROVED MANUFACTURED SOURCE 0.062 THK.
  2. SOLDER PLATE PER QD-S-571
  3. SOLDER MASK BOTH SIDES. COLOR GREEN. WET PHOTO IMAGABLE OR DRY FILM
  4. SILKSCREEN BOTH SIDES. COLOR WHITE
  5. FINAL PCB TO BE OF U.L. APPROVED SOURCE.
  6. FINISH TO BE SMOBC.



TOLERANCES UNLESS OTHERWISE SPECIFIED FRACTIONS DEC ANGLES ± ± ±		ATARI		
		FAB DRAWING		
		FALCON030/MICROBOX		
APPROVALS	DATE	SCALE	SIZE	DRAWING NO.
DRAWN		1 : 1	C	
CHECKED				
REV	1	DO NOT SCALE DRAWING		SHEET 1 OF 1



